

Wilderness Inventory Unit Index of Documents
Burnt Mtn. OR-034-024, 10 total pages

Page 1: Index Cover Sheet

[Page 2: Form 1 - Documentation of BLM Wilderness Inventory: Findings on Record](#)

[Page 5: Form 2 - Documentation of Current Wilderness Inventory Conditions](#)

[Page 8: Form 2 - Summary of Findings and Conclusions](#)

[Page 9: Wilderness Characteristics Overview–Burnt Mtn OR-034-024 Map 1 of 2](#)

[Page 10: Wilderness Characteristics–Land Treatments–Burnt Mtn OR-034-024 Map 2 of 2](#)

**Prepared by:
U.S. Department of the Interior
Bureau of Land Management
Vale District Office
100 Oregon Street
Vale, Oregon 97918**



H-6300-1-WILDERNESS INVENTORY MAINTENANCE IN BLM OREGON/WASHINGTON

APPENDIX B – INVENTORY AREA EVALUATION

Evaluation of Current Conditions:

- 1) Document and review the existing BLM wilderness inventory findings on file, if available, regarding the presence or absence of individual wilderness characteristics, using Form 1, below.
- 2) Consider relevant information regarding current conditions available in the office to identify and describe any changes to the existing information (use interdisciplinary (ID) team knowledge, aerial photographs, field observations, maps, etc.), and document your findings on Form 2, below.

When Citizen Information has been submitted regarding wilderness characteristics, document the submitted materials including: date of Submission; Name of District(s) and Field Office(s) Affected; Type of material Submitted (e.g. narrative, map, photo). Evaluate any submitted citizen information regarding the validity of proposed boundaries of the unit(s), the existence of roads and other boundary features, the size of the unit(s), and the presence or absence of wilderness characteristics based on relevant information available in the office (prior BLM inventories, ID team knowledge, aerial photographs, field observations, maps, etc.)

Conduct field reviews as necessary to verify information and to ascertain current conditions. Reach conclusions on current conditions including boundaries, size of areas and presence or absence of wilderness characteristics. Fully explain the basis for each conclusion on form 2, including any critical differences between BLM and citizen information.

Document your findings regarding current conditions for each inventoried area. Describe how the present conditions are similar to, or have changed from, the conditions documented in the original wilderness inventory. Document your findings on Form 2 for each inventory area. Cite to or attach data considered, including photographs, maps, GIS layers, field trip notes, project files, *etc.*

Year: 2008 Unit Number/Name: OR-034-024 – Burnt Mountain

**FORM 1 -- DOCUMENTATION OF BLM WILDERNESS INVENTORY
FINDINGS ON RECORD**

1. Is there existing BLM wilderness inventory information on all or part of this area?

Yes X No _____ (If yes, and if more than one unit is within the area, list the names of those units.):

A.) Inventory Source(s) -- (X) Denotes all applicable BLM Inventory files, printed maps, or published BLM Decision documents with information pertaining to this unit.

Wilderness Inventories

- (X) 1978-1980 – BLM Wilderness Inventory Units 3-54 of OR-03-03-04-08 Burnt Mountain (unpublished BLM documents in case files)
- () April 1979 – *Wilderness -- Proposed Initial Inventory – Roadless Areas and Islands Which Clearly Do Not have Wilderness Characteristics, Oregon and Washington*

Wilderness Decision Documents

- (X) August 1979 – *Wilderness Review – Initial Inventory, Final Decision on Public Lands Obviously Lacking Wilderness Characteristics and Announcement of Public Lands to be Intensively Inventoried for Wilderness Characteristics, Oregon and Washington* (green document)
- (X) October 1979 – *Wilderness Review – Intensive Inventory - Oregon, Proposed Decision on the Intensive Wilderness Inventory of Selected Areas* (grey document)
- (X) March 1980 – *Wilderness Review – Intensive Inventory; Final Decisions on 30 Selected Units in Southeast Oregon and Proposed Decisions on Other Intensively Inventoried Units in Oregon and Washington* (orange document)
- (X) November 1980 - *Wilderness Inventory – Oregon and Washington, Final Intensive Inventory Decisions* (brown document)
- () November 1981 *Stateline Intensive Wilderness Inventory Final Decision, Oregon, Idaho, Nevada, Utah* (tan document)

B.) Inventory Unit Name(s)/Number(s)

BLM 3-54 of OR-03-04-08 Burnt Mountain

C.) Map Name(s)/Number(s)

- **(X)** Final Decision – Initial Wilderness Inventory Map, August 1979, Oregon
- **()** Proposed Decision -- Intensive Wilderness Inventory of Selected Areas Map, October 1979, Oregon
- **(X)** Intensive Wilderness Inventory Map, March 1980, Oregon
- **(X)** Intensive Wilderness Inventory --Final Decisions Map, November 1980, Oregon
- **()** November, 1981 *Stateline Intensive Wilderness Inventory Final Decision, Oregon, Idaho, Nevada, Utah* (tan document)

D.) BLM District(s)/Field Office(s)

Vale District / Malheur Resource Area

2. BLM Inventory Findings on Record

(Existing inventory information regarding wilderness characteristics (if more than one BLM inventory unit is associated with the area, list each unit and answer each question individually for each inventory unit):

Inventory Source: See above.

Unit#/ Name	Size (historic acres)	Natural Condition? Y/N	Outstanding Solitude? Y/N	Outstanding Primitive & Unconfined Recreation? Y/N	Supplemental Values? Y/N
3-54 of OR-03-04-08 Burnt Mountain	9,600	Y	N	N	*
TOTAL	9,600				

* No confirmed supplemental values mentioned in this inventory, although stating rare reptiles and plants may be present.

H-6300-1-WILDERNESS INVENTORY MAINTENANCE IN BLM OREGON/WASHINGTON

APPENDIX B – INVENTORY AREA EVALUATION

Evaluation of Current Conditions:

- 1) Document and review the existing BLM wilderness inventory findings on file, if available, regarding the presence or absence of individual wilderness characteristics, using Form 1, below.
- 2) Consider relevant information regarding current conditions available in the office to identify and describe any changes to the existing information (use interdisciplinary (ID) team knowledge, aerial photographs, field observations, maps, etc.), and document your findings on Form 2, below.

When Citizen Information has been submitted regarding wilderness characteristics, document the submitted materials including: date of Submission; Name of District(s) and Field Office(s) Affected; Type of material Submitted (e.g. narrative, map, photo). Evaluate any submitted citizen information regarding the validity of proposed boundaries of the unit(s), the existence of roads and other boundary features, the size of the unit(s), and the presence or absence of wilderness characteristics based on relevant information available in the office (prior BLM inventories, ID team knowledge, aerial photographs, field observations, maps, etc.)

Conduct field reviews as necessary to verify information and to ascertain current conditions. Reach conclusions on current conditions including boundaries, size of areas and presence or absence of wilderness characteristics. Fully explain the basis for each conclusion on form 2, including any critical differences between BLM and citizen information.

Document your findings regarding current conditions for each inventoried area. Describe how the present conditions are similar to, or have changed from, the conditions documented in the original wilderness inventory. Document your findings on Form 2 for each inventory area. Cite to or attach data considered, including photographs, maps, GIS layers, field trip notes, project files, *etc.*

FORM 2 -- DOCUMENTATION OF CURRENT WILDERNESS INVENTORY CONDITIONS

Unit Number/Name: OR-034-024 – Burnt Mountain

Description of Current Conditions: [Include land ownership, location, topography, vegetation features and summary of major human uses/activities.]

1. Is the unit of sufficient size?

Yes X No

Description: Refer to this document's associated Map 1 for the inventory unit's location. The unit has 8,105 acres of public land. The unit's boundaries are the same as the 1970's wilderness characteristics inventory: two roads -- BLM 7320-0-00 and Oxbow Basin -- and the administrative boundary with the Bureau of Reclamation (BOR) for Owyhee Reservoir. Boundary roads are mechanically maintained as need to provide for relatively regular and continuous use.

2. Is the unit in a natural condition?

Yes X No N/A

Description: The unit consists of ridges, hills, eroded rims and plateaus. Burnt Mountain is in the middle of the unit, forming one main ridgeline to the north. To the south the ridge breaks up and slopes down to a major drainage. The western half of the unit is sloping terrain rising up from Oxbow Basin to the ridge; on the east, the ridge falls off abruptly to Owyhee Reservoir on BOR. Elevations within the unit range from 3,014 to 3,861 feet. The vegetation is desert sage community with a dominance of cheat grass and some bunchgrasses. Portions of the area have been affected by wildfire, as recent as 2001.

Refer to this document's associated Maps 1 and 2 for an overview of human imprints within the unit. A 2.3 mile-long fence is close to and parallels BLM road 7320-0-00 along the unit's west boundary. A 0.3 mile fence is in the unit's NE corner and a developed spring is in same general area. Fourteen motorized primitive trails (MPTs) for a total of 9.6 miles are distributed along the length of the unit, all originating from the Oxbow Basin boundary road. During 2001, within the generally central portion of the unit, approximately 400 acres were drill seeded with native grasses, and approximately 800 acres were treated with an aerial sage brush seeding or hand planted with native shrubs. Presently, the visual affects of the drill seeded locations are not apparent to the average visitor of the area. Aside from the MPTs penetrating the unit and fences, there is little else in the way of visually evident human imprints. Due to what few, nature of, and distribution of human imprints – individually and collectively -- this unit appears to be

affected primarily by the forces of nature with human imprints substantially unnoticeable to the average visitor.

3. Does the unit have outstanding opportunities for solitude?

Yes X No N/A

Description: There is insufficient vegetation height or density suitable for screening of visitors. Although the unit is notably narrow, the extent of its rugged, often incised and steep terrain in various locations possesses sufficient topographic screening, relative to the unit's size and configuration, to provide outstanding opportunities for solitude. The consensus of the Malheur Resource Area's interdisciplinary team is that the conclusion in the 1970's inventory was in error.

4. Does the unit have outstanding opportunities for primitive and unconfined recreation?

Yes No X N/A

Description: There are opportunities for day hiking, rock collecting, hunting, photography, and sightseeing. Isolated campsites for overnight camping are present but limited. The majority of camp sites are on the high ridges and plateaus, some which are accessed by the motorized primitive trails. There are no special or unique features or attractions of the unit which would more so attract visitors for primitive and unconfined recreation activities. Individually or in combination, the activities occurring within the unit do not provide any outstanding opportunity for primitive and unconfined recreation.

5. Does the unit have supplemental values?

Yes X No N/A

Description: The unit is within the range for California bighorn sheep, a BLM special status animal species in Oregon. The species was delisted in June 2007 from under the federal Endangered Species Act; however, per current (since 12/12/2008) BLM management direction, BLM identifies delisted species to be conserved as BLM sensitive species for 5 years following delisting by the federal Fish and Wildlife Service.

Summary of Findings and Conclusion

Unit Name and Number: OR-034-024 – Burnt Mountain

Summary Results of Analysis:

1. Does the area meet any of the size requirements? Yes No
2. Does the area appear to be natural? Yes No
3. Does the area offer outstanding opportunities for solitude or a primitive and unconfined type of recreation? Yes No NA
4. Does the area have supplemental values? Yes No NA

Conclusion -- check one:

- The area, or a portion of the area, has wilderness character.
- The area does not have wilderness character.

Prepared by: Robert Alward
Robert Alward, Wilderness Planner contractor

Team Members:

<u>Steve Christensen</u>	<u>4-13-2009</u>
Steve Christensen, Rangeland Management Specialist	Date
<u>Shaney Rockefeller</u>	<u>4/13/09</u>
Shaney Rockefeller, Soil Scientist	Date
<u>Dave Draheim</u>	<u>4.13.2009</u>
Dave Draheim, Outdoor Recreation Planner	Date
<u>Jonathan Westfall</u>	<u>04/13/2009</u>
Jon Westfall, Geologist	Date
<u>Brent Grasty</u>	<u>4/13/09</u>
Brent Grasty, GIS Coordinator	Date

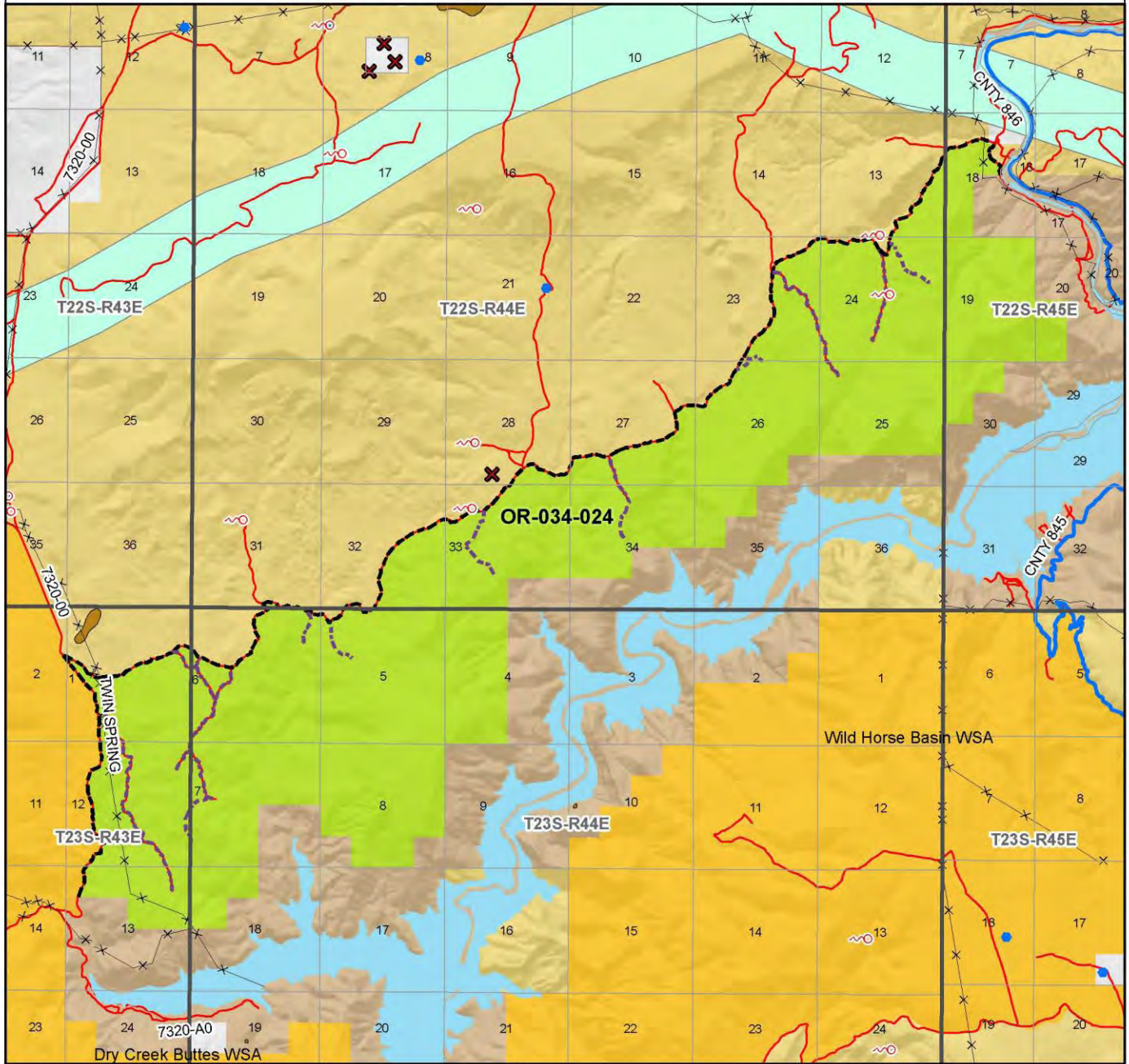
(NOTE: Previous staff members who reviewed this unit include Botanist Jean Finley (retired 7/2008), and Wildlife Biologist Technician Sandy Vistine Ambor (transferred 8/2008)).

Approved by: Pat Ryan 10/15/10
Pat Ryan, Malheur Resource Area Field Manager Date

This form documents information that constitutes an inventory finding on wilderness characteristics. It does not represent a formal land use allocation or a final agency decision subject to administrative remedies under either 43 CFR parts 4 or 1610.5-2.

Wilderness Characteristics - Overview

Burnt Mountain - OR-034-024 - Map 1 of 2



<p>Legend</p> <ul style="list-style-type: none"> Developed Spring Wildlife Guzzler Earthen Reservoir Pipeline Trough Fence Storage Tank Surface Mining Disturbance Sage Grouse Lek Special Status Plant BLM Wild Char Inventory Unit Wilderness Study Area Mineral Material Site Road/Utility Right-of-Way Major Water Body 	<p>Route Types - BLM Determination</p> <ul style="list-style-type: none"> Boundary Road Motorized Primitive Trail (MPT) Discontinued Use <p>Routes - Outside Wild Char Unit</p> <ul style="list-style-type: none"> County Major Highway BLM Numbered & Other Routes <p>Land Ownership</p> <ul style="list-style-type: none"> Bureau of Land Management State Private Other Federal Land 	
--	--	--

U.S. DEPARTMENT OF THE INTERIOR
BUREAU OF LAND MANAGEMENT

VALE DISTRICT
November 24, 2008

No warranty is made by the Bureau of Land Management as to the accuracy, reliability, or completeness of these data for individual or aggregate use with other data. Original data were compiled from various sources. This information may not meet National Map Accuracy Standards. This product was developed through digital means and may be updated without notification.

-FINAL-

