

Wilderness Inventory Unit Index of Documents
Black Jack Butte OR-034-021, 10 total pages

Page 1: Index Cover Sheet

[Page 2: Form 1 – Documentation of BLM Wilderness Inventory: Findings on Record](#)

[Page 5: Form 2 – Documentation of Current Wilderness Inventory Conditions](#)

[Page 8: Form 2 – Summary of Findings and Conclusion](#)

[Page 9: Wilderness Characteristics Overview – Black Jack Butte OR-034-021 Map 1 of 2](#)

[Page 10: Wilderness Characteristics-Land Treatments-Black Jack Butte OR-034-021 Map 2 of 2](#)

**Prepared by:
U.S. Department of the Interior
Bureau of Land Management
Vale District Office
100 Oregon Street
Vale, Oregon 97918**



H-6300-1-WILDERNESS INVENTORY MAINTENANCE IN BLM OREGON/WASHINGTON

APPENDIX B – INVENTORY AREA EVALUATION

Evaluation of Current Conditions:

- 1) Document and review the existing BLM wilderness inventory findings on file, if available, regarding the presence or absence of individual wilderness characteristics, using Form 1, below.
- 2) Consider relevant information regarding current conditions available in the office to identify and describe any changes to the existing information (use interdisciplinary (ID) team knowledge, aerial photographs, field observations, maps, etc.), and document your findings on Form 2, below.

When Citizen Information has been submitted regarding wilderness characteristics, document the submitted materials including: date of Submission; Name of District(s) and Field Office(s) Affected; Type of material Submitted (e.g. narrative, map, photo). Evaluate any submitted citizen information regarding the validity of proposed boundaries of the unit(s), the existence of roads and other boundary features, the size of the unit(s), and the presence or absence of wilderness characteristics based on relevant information available in the office (prior BLM inventories, ID team knowledge, aerial photographs, field observations, maps, etc.)

Conduct field reviews as necessary to verify information and to ascertain current conditions. Reach conclusions on current conditions including boundaries, size of areas and presence or absence of wilderness characteristics. Fully explain the basis for each conclusion on form 2, including any critical differences between BLM and citizen information.

Document your findings regarding current conditions for each inventoried area. Describe how the present conditions are similar to, or have changed from, the conditions documented in the original wilderness inventory. Document your findings on Form 2 for each inventory area. Cite to or attach data considered, including photographs, maps, GIS layers, field trip notes, project files, *etc.*

Year: 2009 Unit Number/Name: OR-034-021—Black Jack Butte

**FORM 1 -- DOCUMENTATION OF BLM WILDERNESS INVENTORY
FINDINGS ON RECORD**

1. Is there existing BLM wilderness inventory information on all or part of this area?

Yes X No _____ (If yes, and if more than one unit is within the area, list the names of those units.):

A.) Inventory Source(s) -- (X) Denotes all applicable BLM Inventory files, printed maps, or published BLM Decision documents with information pertaining to this unit.

Wilderness Inventories

- (X) 1978-1980 – BLM Wilderness Inventory subunit 3-305 of OR-03-03-10 Coyote Gulch (unpublished BLM documents case files)
- () April 1979 – *Wilderness -- Proposed Initial Inventory – Roadless Areas and Islands Which Clearly Do Not have Wilderness Characteristics, Oregon and Washington*

Wilderness Decision Documents

- (X) August 1979 – *Wilderness Review – Initial Inventory, Final Decision on Public Lands Obviously Lacking Wilderness Characteristics and Announcement of Public Lands to be Intensively Inventoried for Wilderness Characteristics, Oregon and Washington* (green document)
- () October 1979 – *Wilderness Review – Intensive Inventory - Oregon, Proposed Decision on the Intensive Wilderness Inventory of Selected Areas* (grey document)
- () March 1980 – *Wilderness Review – Intensive Inventory; Final Decisions on 30 Selected Units in Southeast Oregon and Proposed Decisions on Other Intensively Inventoried Units in Oregon and Washington* (orange document)
- () November 1980 - *Wilderness Inventory – Oregon and Washington, Final Intensive Inventory Decisions* (brown document)
- () November 1981 *Stateline Intensive Wilderness Inventory Final Decision, Oregon, Idaho, Nevada, Utah* (tan document)

B.) Inventory Unit Name(s)/Number(s)

Subunit 3-305 of OR-03-03-10 Coyote Gulch (with subunits 3-303, 3-304 and 3-305).

C.) Map Name(s)/Number(s)

- () Final Decision – Initial Wilderness Inventory Map, August 1979, Oregon
- () Proposed Decision -- Intensive Wilderness Inventory of Selected Areas Map, October 1979, Oregon
- () Intensive Wilderness Inventory Map, March 1980, Oregon
- () Intensive Wilderness Inventory --Final Decisions Map, November 1980, Oregon
- () November, 1981 *Stateline Intensive Wilderness Inventory Final Decision, Oregon, Idaho, Nevada, Utah* (tan document)

D.) BLM District(s)/Field Office(s)

Vale District/Malheur Resource Area

2. BLM Inventory Findings on Record

(Existing inventory information regarding wilderness characteristics (if more than one BLM inventory unit is associated with the area, list each unit and answer each question individually for each inventory unit):

Inventory Source: See above.

Unit#/Name	Size (historic acres)	Natural Condition? Y/N	Outstanding Solitude? Y/N	Outstanding Primitive & Unconfined Recreation? Y/N	Supplemental Values? Y/N
3-305 portion of OR-03-03- 10 – Coyote Gulch	*	*	*	*	*
TOTAL	*				

*--These criteria were not specifically addressed in the original inventory for subunit 3-305. The 3-305 subunit (of undefined acreage) of the original larger (38,500 ac) Coyote Gulch unit (OR-03-03-10) is what this document, under Form 2, is addressing. The remaining two subunits (3-303 and 3-304) of the Coyote Gulch unit are not addressed herein, nor are they as part of the 2007 wilderness characteristics maintenance because, currently, areas which take in the historic 3-303 and 3-304 subunits do not meet minimum size requirements for wilderness characteristics.

H-6300-1-WILDERNESS INVENTORY MAINTENANCE IN BLM OREGON/WASHINGTON

APPENDIX B – INVENTORY AREA EVALUATION

Evaluation of Current Conditions:

- 1) Document and review the existing BLM wilderness inventory findings on file, if available, regarding the presence or absence of individual wilderness characteristics, using Form 1, below.
- 2) Consider relevant information regarding current conditions available in the office to identify and describe any changes to the existing information (use interdisciplinary (ID) team knowledge, aerial photographs, field observations, maps, etc.), and document your findings on Form 2, below.

When Citizen Information has been submitted regarding wilderness characteristics, document the submitted materials including: date of Submission; Name of District(s) and Field Office(s) Affected; Type of material Submitted (e.g. narrative, map, photo). Evaluate any submitted citizen information regarding the validity of proposed boundaries of the unit(s), the existence of roads and other boundary features, the size of the unit(s), and the presence or absence of wilderness characteristics based on relevant information available in the office (prior BLM inventories, ID team knowledge, aerial photographs, field observations, maps, etc.)

Conduct field reviews as necessary to verify information and to ascertain current conditions. Reach conclusions on current conditions including boundaries, size of areas and presence or absence of wilderness characteristics. Fully explain the basis for each conclusion on form 2, including any critical differences between BLM and citizen information.

Document your findings regarding current conditions for each inventoried area. Describe how the present conditions are similar to, or have changed from, the conditions documented in the original wilderness inventory. Document your findings on Form 2 for each inventory area. Cite to or attach data considered, including photographs, maps, GIS layers, field trip notes, project files, *etc.*

FORM 2 -- DOCUMENTATION OF CURRENT WILDERNESS INVENTORY CONDITIONS

Unit Number/Name – **OR-034-021—Black Jack Butte**

Description of Current Conditions: [Include land ownership, location, topography, vegetation features and summary of major human uses/activities.]

1. Is the unit of sufficient size?

Yes X No _____

Description: Refer to the attached map for the inventory unit's location. The 5,832 acre unit is bounded by State Highway 201, county and BLM roads, a road associated with an electric power line ROW, a BLM designated mineral materials site, a 200 foot wide (100 feet each side of center line) ROW boundary associated with BOR's Tunnel No. 5, and private lands. The boundaries are similar to BLM's 1970's wilderness characteristics inventory of historic subunit 3-305 (of the larger historic OR-03-03-10 Coyote Gulch inventory unit). A cherry-stem road of 1.1 miles is also a feature of the unit's boundary. The unit's boundary roads are mechanically maintained as needed to provide for relatively regular and seasonally continuous use.

2. Is the unit in a natural condition?

Yes X No _____ N/A _____

Description: The unit's dominate, centrally located feature is Black Jack Butte and its associated multiple draws and drainages branching from it. Elevations range from approximately 3,600 to 2,350 feet. Dominate vegetation is sagebrush and various native and non-native grass species.

Refer to the attached maps from human imprints within the unit. There are 8.1 miles of 7 motorized primitive trails, 3.2 miles of rangeland fence, one wildlife guzzler and one earthen reservoir in the unit. There remains virtually no visual evidence of an abandoned 1.3 mile motorized primitive vehicle route segment. At the time of the conducted 1970's wilderness characteristics inventory, the visual appearance of the total of 575 acres of two substantially separated crested wheatgrass seedings established prior to 1978 were determined to be substantially noticeable to the average visitor. At the time, the seedings substantially adversely affected the area's natural condition and appearance. Presently, visual evidence of range drill furrow scaring and the seedings themselves are no longer substantially noticeable as human imprints to the average visitor of the unit). No recent (2000 or later) fire rehab projects have affected the unit. As a whole, human imprints appear to be substantially unnoticeable to the average visitor with the unit affected primarily by the forces of nature.

3. Does the unit have outstanding opportunities for solitude?Yes _____ No X N/A _____

Description: In its northern third, although there is varying topographic relief, the area is very narrow (1.5 miles or less between the unit's east-west boundaries). The narrowness of this area is too restrictive to provide for outstanding opportunities for solitude. The configuration and size of the remainder of the unit, while recognizing the existence of numerous drainages that provide some topographic screening within it for a sense of isolation and solitude, does not provide an outstanding opportunity for solitude.

4. Does the unit have outstanding opportunities for primitive and unconfined recreation?Yes _____ No X N/A _____

Description: Primarily non-motorized recreational activities include but are not limited hunting common upland and big game species (deer and chukar, primarily) general sightseeing, hiking, and horseback riding. Individually or collectively, none of these activities offer outstanding opportunities for primitive and unconfined recreation. The unit is also subject to some recreational off-road vehicle use.

5. Does the unit have supplemental values?Yes X No _____ N/A _____

Description: There are multiple sites of Mulford's milkvetch, a BLM special status plant species. BLM has documented one lek of sage grouse, a BLM special status bird species.

Summary of Findings and Conclusion

Unit Name and Number: OR-034-021 – Black Jack Butte

Summary Results of Analysis:

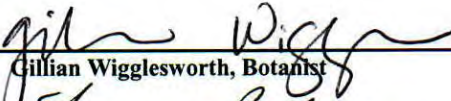
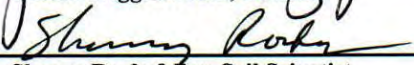

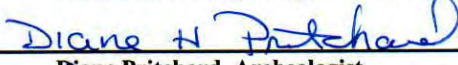

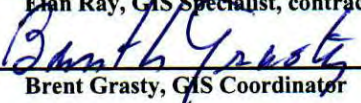
- 1. Does the area meet any of the size requirements? Yes No
- 2. Does the area appear to be natural? Yes No
- 3. Does the area offer outstanding opportunities for solitude or a primitive and unconfined type of recreation? Yes No NA
- 4. Does the area have supplemental values? Yes No NA

Conclusion -- check one:

- The area, or a portion of the area, has wilderness character.
- The area does not have wilderness character.

Prepared by: 
Robert Alward, Wilderness Planner contractor

Team Members:

<u></u>	<u>2/5/10</u>
Gillian Wigglesworth, Botanist	Date
<u></u>	<u>3/10/10</u>
Shaney Rockefeller, Soil Scientist	Date
<u></u>	<u>2-23-2010</u>
Steve Christensen, Rangeland Management Specialist	Date
<u></u>	<u>2/8/10</u>
Diane Pritchard, Archeologist	Date
<u></u>	<u>02/09/10</u>
Eian Ray, GIS Specialist, contractor	Date
<u></u>	<u>2/9/10</u>
Brent Grasty, GIS Coordinator	Date

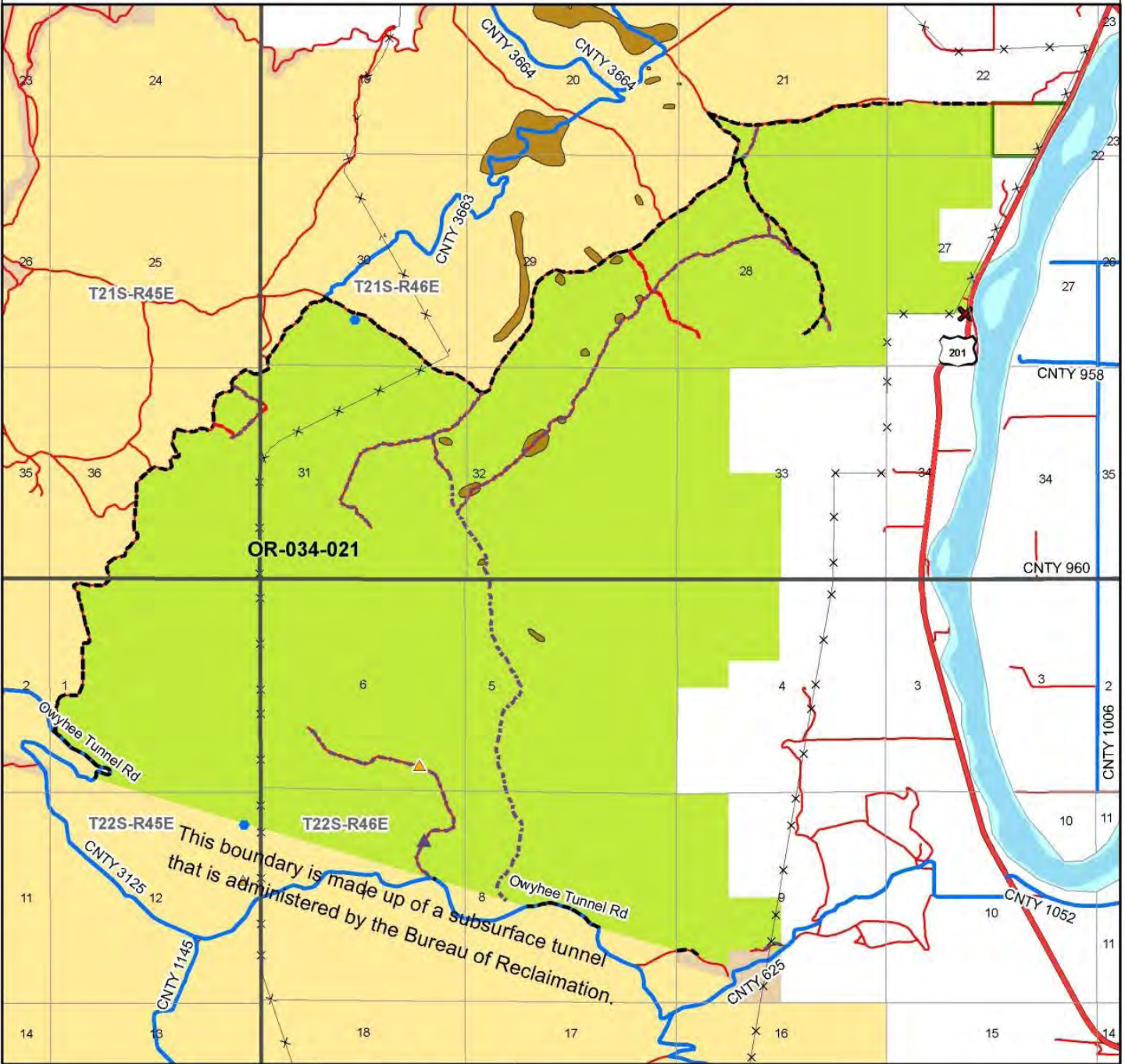
Approved by: 
Pat Ryan, Malheur Resource Area Field Manager

3/30/2010
Date

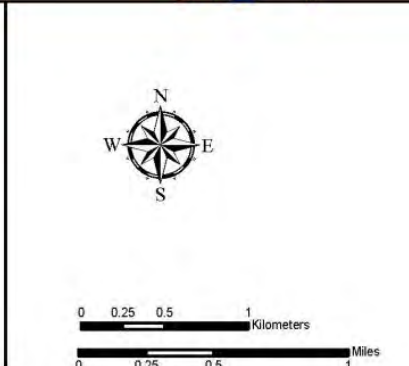
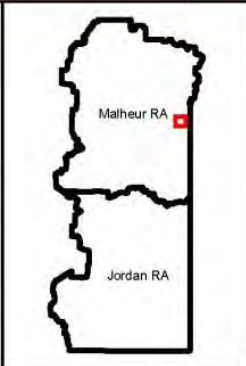
This form documents information that constitutes an inventory finding on wilderness characteristics. It does not represent a formal land use allocation or a final agency decision subject to administrative remedies under either 43 CFR parts 4 or 1610.5-2.

Wilderness Characteristics - Overview

Black Jack Butte - OR-034-021 - Map 1 of 2



Legend	
	Developed Spring
	Wildlife Guzzler
	Earthen Reservoir
	Pipeline
	Trough
	Fence
	Storage Tank
	Surface Mining Disturbance
	Sage Grouse Lek
	Special Status Plant
	BLM Wild Char Inventory Unit
	Wilderness Study Area
	Mineral Material Site
	Major Water Body
	Route Types - BLM Determination Boundary Road
	Motorized Primitive Trail (MPT)
	Discontinued Use
	Routes - Outside Wild Char Unit
	Major Highway
	BLM Numbered & Other Routes
	Land Ownership Bureau of Land Management
	State
	Private
	Other Federal Land



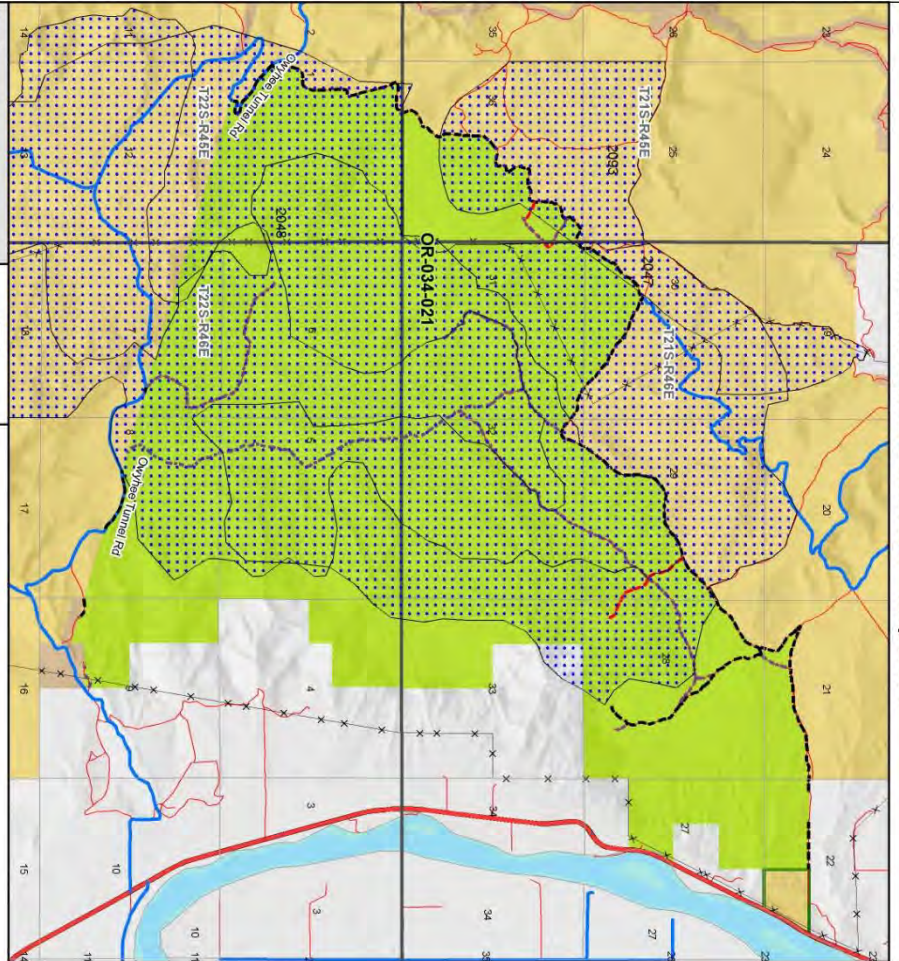
U.S. DEPARTMENT OF THE INTERIOR
BUREAU OF LAND MANAGEMENT

VALE DISTRICT
November 18, 2009

No warranty is made by the Bureau of Land Management as to the accuracy, reliability, or completeness of these data for individual or aggregate use with other data. Original data were compiled from various sources. This information may not meet National Map Accuracy Standards. This product was developed through digital means and may be updated without notification.

--FINAL--

Wilderness Characteristics - Land Treatments
Black Jack Butte - OR-034-021 - Map 2 of 2



Legend

<ul style="list-style-type: none"> Land Treatments Board Corral's Fire Rehab Blackjack Seeding Canal Seeding 	<ul style="list-style-type: none"> Other Types - BLM Determination Inventory Road Inventory Fence Inventory Structure Inventory Well Inventory Pipeline Inventory Power Line Inventory Water Line Inventory Gas Line Inventory Telephone Line Inventory Cable TV Line Inventory Irrigation Line Inventory Other
--	--

Land Ownership

<ul style="list-style-type: none"> Private State County Other Other (Private Land) 	<ul style="list-style-type: none"> Private State County Other Other (Private Land)
---	---

Scale

0 0.25 0.5 1 Kilometers

0 0.25 0.5 1 Miles

U.S. DEPARTMENT OF THE INTERIOR
BUREAU OF LAND MANAGEMENT

VALE DISTRICT
 November 18, 2009

This map was prepared by the Bureau of Land Management for the purpose of providing information on land ownership and land use. It is not intended to be used for any other purpose. The Bureau of Land Management is not responsible for any errors or omissions in this map. The information on this map is provided for informational purposes only and should not be used for any other purpose.

--FINAL--

OBJECTID *	NAME	TREATMENT TYPE	SEED GROUP	DATE
2047	BOARD CORRAL'S FIRE REHAB	Drill Seeding	A mix of non-native gr	1974
2048	BLACKJACK SEEDING	Drill Seeding	Unknown	1973
2093	CANAL SEEDING	Drill Seeding	A mix of non-native gr	1996

Note: The Land Treatments represented by navy blue dots on the map to the left are labeled with the treatments' ObjectIDs listed in the first field of the Land Treatments table shown above. Multiple types of treatments may have been applied to the same area. For example, one treatment area may have been plowed and drill seeded - a record is shown in the table for each type of treatment.