

Wilderness Inventory Unit Index of Documents  
**Arock OR-036-074, 11 total pages**

Page 1: Index Cover Sheet

[Page 2: Form 1 – Documentation of BLM Wilderness Inventory: Findings on Record](#)

[Page 5: Form 2 – Documentation of Current Wilderness Inventory Conditions](#)

[Page 9: Form 2 – Summary of Findings and Conclusion](#)

[Page 10: Wilderness Characteristics Overview – Arock OR-036-074 Map 1 of 2](#)

[Page 11: Wilderness Characteristics -Land Treatments- Arock OR-036-074 Map 2 of 2](#)

**Prepared by:**  
**U.S. Department of the Interior**  
**Bureau of Land Management**  
**Vale District Office**  
**100 Oregon Street**  
**Vale, Oregon 97918**



## **H-6300-1-WILDERNESS INVENTORY MAINTENANCE IN BLM OREGON/WASHINGTON**

### **APPENDIX B – INVENTORY AREA EVALUATION**

#### **Evaluation of Current Conditions:**

- 1) Document and review the existing BLM wilderness inventory findings on file, if available, regarding the presence or absence of individual wilderness characteristics, using Form 1, below.
- 2) Consider relevant information regarding current conditions available in the office to identify and describe any changes to the existing information (use interdisciplinary (ID) team knowledge, aerial photographs, field observations, maps, etc.), and document your findings on Form 2, below.

When Citizen Information has been submitted regarding wilderness characteristics, document the submitted materials including: date of Submission; Name of District(s) and Field Office(s) Affected; Type of material Submitted (e.g. narrative, map, and photos). Evaluate any submitted citizen information regarding the validity of proposed boundaries of the unit(s), the existence of roads and other boundary features, the size of the unit(s), and the presence or absence of wilderness characteristics based on relevant information available in the office (prior BLM inventories, ID team knowledge, aerial photographs, field observations, maps, etc.)

Conduct field reviews as necessary to verify information and to ascertain current conditions. Reach conclusions on current conditions including boundaries, size of areas and presence or absence of wilderness characteristics. Fully explain the basis for each conclusion on form 2, including any critical differences between BLM and citizen information.

Document your findings regarding current conditions for each inventoried area. Describe how the present conditions are similar to, or have changed from, the conditions documented in the original wilderness inventory. Document your findings on Form 2 for each inventory area. Cite to or attach data considered, including photographs, maps, GIS layers, field trip notes, project files, *etc.*

**Year:** 2011      **Unit Number/Name:** OR-036-074 — Arock

**FORM 1 -- DOCUMENTATION OF BLM WILDERNESS INVENTORY  
FINDINGS ON RECORD**

**1. Is there existing BLM wilderness inventory information on all or part of this area?**

Yes  No  (If yes, and if more than one unit is within the area, list the names of those units.):

**A.) Inventory Source(s) -- (X)** Denotes all applicable BLM Inventory files, printed maps, or published BLM Decision documents with information pertaining to this unit.

**Wilderness Inventories**

- (X) 1978 – 1980 -- BLM Wilderness Inventory Units 3-125 of OR-03-09-06 Arock and partial of OR-03-10-37 Dowell (unpublished BLM documents stored in Vale District case files)
- (X) April 1979 – *Wilderness -- Proposed Initial Inventory – Roadless Areas and Islands Which Clearly Do Not have Wilderness Characteristics, Oregon and Washington*

**Wilderness Decision Documents**

- (X) August 1979 – *Wilderness Review – Initial Inventory, Final Decision on Public Lands Obviously Lacking Wilderness Characteristics and Announcement of Public Lands to be Intensively Inventoried for Wilderness Characteristics, Oregon and Washington* (green document)
- ( ) October 1979 – *Wilderness Review – Intensive Inventory - Oregon, Proposed Decision on the Intensive Wilderness Inventory of Selected Areas* (grey document).
- ( ) March 1980 – *Wilderness Review – Intensive Inventory; Final Decisions on 30 Selected Units in Southeast Oregon and Proposed Decisions on Other Intensively Inventoried Units in Oregon and Washington* (orange document)
- ( ) November 1980 - *Wilderness Inventory – Oregon and Washington, Final Intensive Inventory Decisions* (brown document)
- ( ) November 1981 *Stateline Intensive Wilderness Inventory Final Decision, Oregon, Idaho, Nevada, Utah* (tan document).

**B.) Inventory Unit Name(s)/Number(s)**

BLM 3-125 of OR-03-09-06 Arock and partial of OR-03-10-37 Dowell

**C.) Map Name(s)/Number(s)**

- Final Decision – Initial Wilderness Inventory Map, August 1979, Oregon
- Proposed Decision -- Intensive Wilderness Inventory of Selected Areas Map, October 1979, Oregon
- Intensive Wilderness Inventory Map, March 1980, Oregon
- Intensive Wilderness Inventory --Final Decisions Map, November 1980, Oregon.
- November, 1981 *Stateline Intensive Wilderness Inventory Final Decision, Oregon, Idaho, Nevada, Utah* (tan document).

**D.) BLM District(s)/Field Office(s)**

Vale District Office

Jordan Field Office

**2. BLM Inventory Findings on Record**

(Existing inventory information regarding wilderness characteristics (if more than one BLM inventory unit is associated with the area, list each unit and answer each question individually for each inventory unit):

**Inventory Source:** See above.

Unit# / Name	Size (historic acres)	Natural Condition? Y/N	Outstanding Solitude? Y/N	Outstanding Primitive & Unconfined Recreation? Y/N	Supplemental Values? Y/N
3-125 OR-03-09-06 Arock	9,760	N	*	*	*
Partial of OR-03-10-37 Dowell	6,600**	*	*	*	*
<b>TOTAL</b>	16,360				

\*-- These criteria were not specifically addressed during the inventory of this unit.

\*\*-- Original inventory of 1978-1980 did not contain a contiguous block of Public Land greater than 5,000 acres within the unit. Thus, Natural Condition and other characteristics were not previously addressed for any parcel within the Dowell unit. Since the 1978-1980 original inventories a land exchange has occurred providing a larger Public Land parcel within the OR-03-10-39 unit.

## **H-6300-1-WILDERNESS INVENTORY MAINTENANCE IN BLM OREGON/WASHINGTON**

### **APPENDIX B – INVENTORY AREA EVALUATION**

#### **Evaluation of Current Conditions:**

1) Document and review the existing BLM wilderness inventory findings on file, if available, regarding the presence or absence of individual wilderness characteristics, using Form 1, below.

2) Consider relevant information regarding current conditions available in the office to identify and describe any changes to the existing information (use interdisciplinary (ID) team knowledge, aerial photographs, field observations, maps, etc.), and document your findings on Form 2, below.

When Citizen Information has been submitted regarding wilderness characteristics, document the submitted materials including: date of Submission; Name of District(s) and Field Office(s) Affected; Type of material Submitted (e.g. narrative, map, photo). Evaluate any submitted citizen information regarding the validity of proposed boundaries of the unit(s), the existence of roads and other boundary features, the size of the unit(s), and the presence or absence of wilderness characteristics based on relevant information available in the office (prior BLM inventories, ID team knowledge, aerial photographs, field observations, maps, etc.)

Conduct field reviews as necessary to verify information and to ascertain current conditions. Reach conclusions on current conditions including boundaries, size of areas and presence or absence of wilderness characteristics. Fully explain the basis for each conclusion on form 2, including any critical differences between BLM and citizen information.

Document your findings regarding current conditions for each inventoried area. Describe how the present conditions are similar to, or have changed from, the conditions documented in the original wilderness inventory. Document your findings on Form 2 for each inventory area. Cite to or attach data considered, including photographs, maps, GIS layers, field trip notes, project files, *etc.*

## **FORM 2 -- DOCUMENTATION OF CURRENT WILDERNESS INVENTORY CONDITIONS**

**Unit Name/ Number:** OR-036-074 — Arock

---

**Description of Current Conditions:** [Include land ownership, location, topography, vegetation features and summary of major human uses/activities.]

### **1. Is the unit of sufficient size?**

Yes   X   No       

**Description:** Refer to this inventory unit's associated Map 1 for its location. The 23,274 acre unit was included as part of the original BLM unit 3-125 of OR-03-09-06 Arock and partial unit of OR-03-10-37 Dowell of the latter 1970's meeting the size criteria. Acreage for unit OR-036-074 in Form 2 is calculated from BLM GIS information. The adjustment of acreage within the unit includes parcels that were acquired or eliminate parcels that were part of land exchanges that have occurred since the 1978-1980 wilderness inventory process. The unit boundary consists of a utility corridor right-of-way on its south side, Private parcels and BLM Road 7303-0-00 on its west side, and private parcels and BLM Road 7310-0-0A0 on its east side. The two BLM roads intersect at the unit's extreme northern point. The natural-surfaced boundary roads receive mechanical maintenance as needed to keep them passable on a regular and continuous (seasonal) basis.

### **2. Is the unit in a natural condition?**

Yes        No   X   N/A       

**Description:** Overall, the area appears to be primarily affected by the influences of man with the imprint of humans substantially noticeable to the average visitor. BLM Unit OR-036-074 consists of a rolling nearly flat terrain with the exception of the predominate features of Owyhee Butte and Little Owyhee Butte in the central portion of the unit and the canyon associated with approximately two miles of the Jordan Creek drainage in the southern part of the unit. The unit's remaining small drainages flow either into Jordan Creek or to the Owyhee River. Vegetation within the unit consists primarily of either big or low sagebrush that contain native and non-native grass species. Some of the more alkali prone acreages of this unit also contain small areas or isolated islands of salt-desert shrub species. Elevation levels within the unit range from a low of 3,355 feet above mean sea level (msl) in the south along Jordan Creek to a high of 4,223 feet (msl) at the crest of Owyhee Butte in the central portion of the unit.

Refer to this inventory unit's associated Map 1 and Map 2 for its human developments. Human imprints within the unit include 49.1 miles of 28 motorized primitive trails, 21.9 miles of fence line, two pipeline systems consisting of 17.2 miles of pipe, three storage tanks and 17 troughs, 6 earthen reservoirs, 23 vegetation manipulation treatments from 1962 through 2006, and one developed spring. Although numerous vegetation treatments were conducted in over 80 percent of the acreage within the unit over the past four decades, presently to the average visitor, the various vegetation treatments affecting the unit appear as a whole, individually and collectively, mostly indistinguishable. Due to the number of intrusions, particularly the interlaced WPTs and pipelines, their proximity to each other, and the lack of topographic and vegetative screening, the works of man are substantially noticeable. BLM arrives at the same conclusion as did the 1970's inventory that unit OR-036-074 does not appear natural to the average visitor.

### 3. Does the unit have outstanding opportunities for solitude?

Yes \_\_\_\_\_ No  N/A \_\_\_\_\_

**Description:** Refer to this inventory unit's associated Map 1 for visual of unit configuration. The unit is approximately 12 miles long and up to 5 miles wide near the center of unit and tapers to a point in the northern area and narrows to less than 2 miles wide near the southern boundary before expanding to approximately 4 miles in width along the south boundary of the unit. The majority of the unit consists of a flat to rolling open sagebrush plateau that slope to the west and south outwardly from Owyhee Butte and Little Owyhee Butte located near the center of the unit.

Topographic relief is minimal within the unit with elevations ranging from 3,355 to 4,223 feet above mean sea level. Elevation changes in most of the unit traversing from east to west or north to south are gradual. The unit lacks vegetative screening. The broad expanses of low and big sagebrush found within the unit limit the ability for a visitor to find seclusion. Despite the relatively large size of the unit, the long and narrow configuration of unit is dissected by numerous MPTs that lend the unit to not be conducive to provide opportunities for solitude. The sights and sounds emanating from traffic on U.S. Highway 95 detract from opportunities for solitude along much of the unit's southern edge. The present inventory determined the area did not have outstanding opportunities for solitude based on the irregular or narrow shape, absence of vegetation screening, and little diversity in relief. Because of the reasons stated above, BLM concludes that unit OR-036-074 does not provide outstanding opportunities for solitude.

### 4. Does the unit have outstanding opportunities for primitive and unconfined recreation?

Yes \_\_\_\_\_ No  N/A \_\_\_\_\_

**Description:** Opportunities for primitive and unconfined types of recreation are available in the unit. However, opportunities for activities such as hiking, backpacking, hunting,

wildlife viewing, horseback riding and photography are not outstanding because the unit lacks scenic quality, diversity of landforms, and challenging terrain. The present inventory determined the area did not possess outstanding opportunities for primitive and unconfined recreation. Because of the reasons stated above, BLM concludes that unit OR-036-074 does not possess outstanding opportunities for primitive and unconfined recreation.

**5. Does the unit have supplemental values?**

Yes  No  N/A

**Description:** Naked-stem phacellia (*Phacellia gymnoclada*) a BLM sensitive species plant was identified and documented at one site in the unit at T31S, R42E, section 18 NENW. Naked-stem phacellia grows in dry, volcanic ash hillsides and alkali flats in southern Malheur and Harney Counties and into Nevada and California.



**Summary of Findings and Conclusion**

**Unit Name and Number:** OR-036-074 -- Arock

**Summary Results of Analysis:**

- 1. Does the area meet any of the size requirements?  Yes  No
- 2. Does the area appear to be natural?  Yes  No
- 3. Does the area offer outstanding opportunities for solitude or a primitive and unconfined type of recreation?  Yes  No  NA
- 4. Does the area have supplemental values?  Yes  No  NA

**Conclusion -- check one:**

The area, or a portion of the area, has wilderness character.

The area does not have wilderness character.

**Prepared by:** Jack Wenderoth 4-5-11  
Jack Wenderoth, Planning Contractor

**Team Members:**

<u>Aimee Huff</u> Aimee Huff, Rangeland Management Specialist	<u>4/5/2011</u> Date
<u>Eian Ray</u> Eian Ray, GIS Specialist, Contractor	<u>4-5-11</u> Date
<u>Garth R. Ross</u> Garth Ross, Wildlife Biologist	<u>4/5/2011</u> Date
<u>Brent Grasty</u> Brent Grasty, GIS Coordinator	<u>4/5/11</u> Date

**Approved by:**

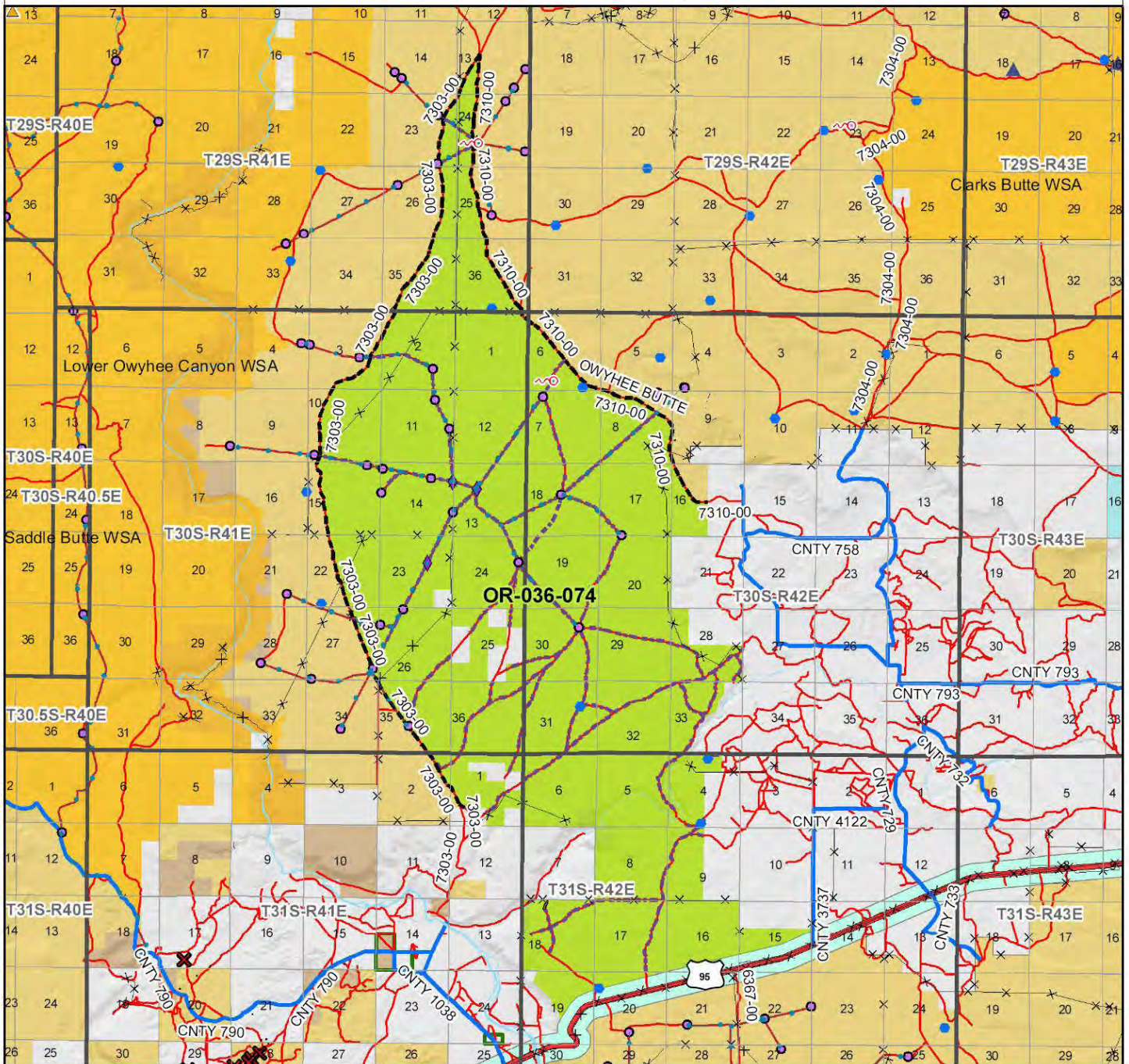
Carolyn R. Freeborn  
Carolyn Freeborn, Jordan Resource Area Field Manager 4/5/2011  
Date

*This form documents information that constitutes an inventory finding on wilderness characteristics. It does not represent a formal land use allocation or a final agency decision subject to administrative remedies under either 43 CFR parts 4 or 1610.5-2.*



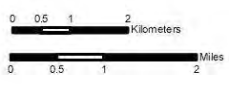
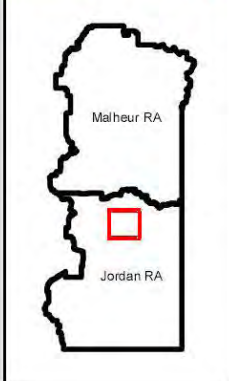
# Wilderness Characteristics - Overview

## Arock - OR-036-074 - Map 1 of 2



### Legend

- |   |  |
|---|--|
| <ul style="list-style-type: none"> <li> Developed Spring</li> <li> Wildlife Guzzler</li> <li> Earthen Reservoir</li> <li> Pipeline</li> <li> Trough</li> <li> Fence</li> <li> Storage Tank</li> <li> Surface Mining Disturbance</li> <li> Sage Grouse Lek</li> <li> Special Status Plant</li> <li> BLM Wild Char Inventory Unit</li> <li> Wilderness Study Area</li> <li> Mineral Material Site</li> <li> Road/Utility Right-of-Way</li> <li> Major Water Body</li> </ul> | <ul style="list-style-type: none"> <li><b>Route Types - BLM Determination</b></li> <li> Boundary Road</li> <li> Motorized Primitive Trail (MPT)</li> <li> Discontinued Use</li> <li><b>Routes - Outside Wild Char Unit</b></li> <li> County</li> <li> Major Highway</li> <li> BLM Numbered &amp; Other Routes</li> <li><b>Land Ownership</b></li> <li> Bureau of Land Management</li> <li> State</li> <li> Private</li> <li> Other Federal Land</li> </ul> |
|---|--|



U.S. DEPARTMENT OF THE INTERIOR  
BUREAU OF LAND MANAGEMENT



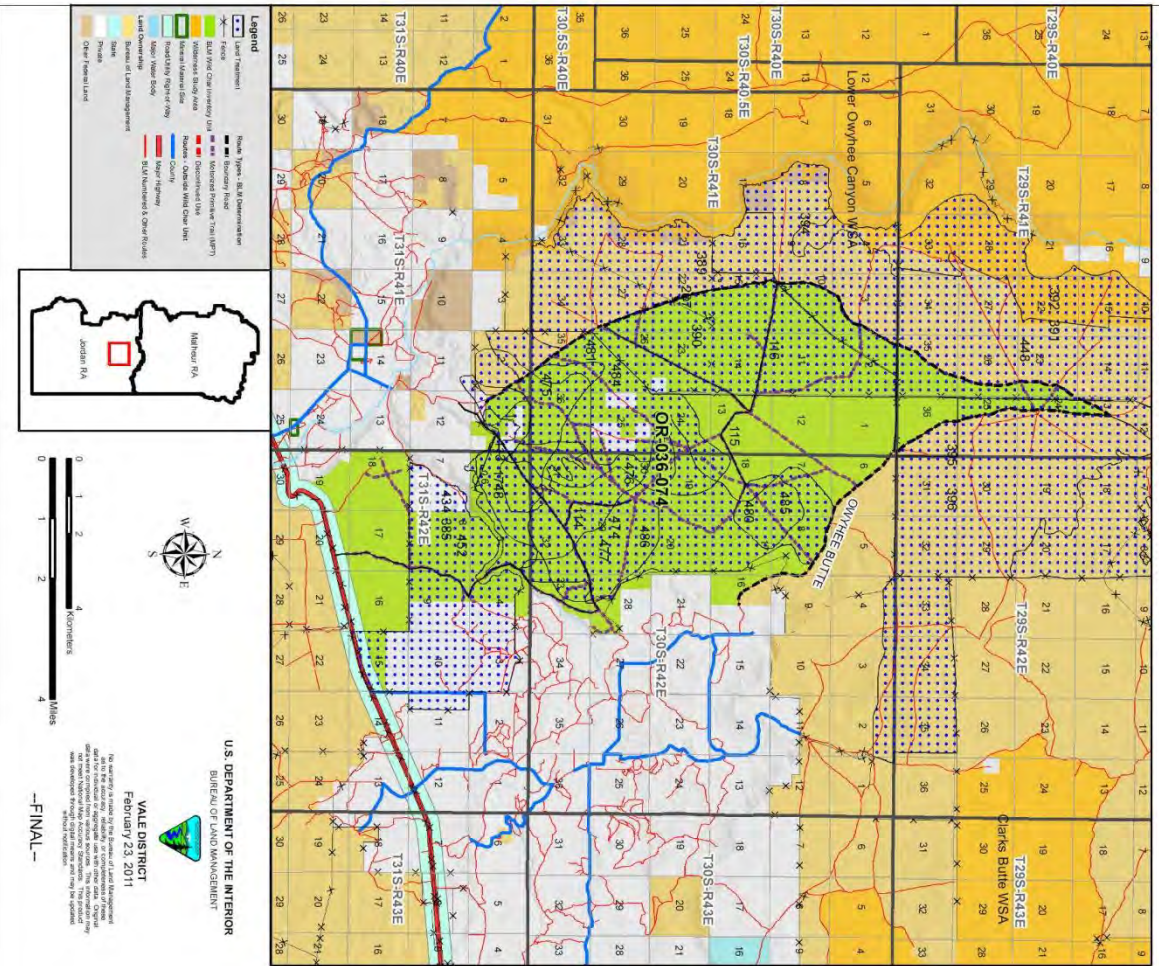
**VALE DISTRICT**  
February 23, 2011

No warranty is made by the Bureau of Land Management as to the accuracy, reliability, or completeness of these data for individual or aggregate use with other data. Original data were compiled from various sources. This information may not meet National Map Accuracy Standards. This product was developed through digital means and may be updated without notification.

--FINAL--



Wilderness Characteristics - Land Treatments  
Arock - OR-036-074 - Map 2 of 2



Wilderness Characteristics - Land Treatments  
Arock - OR-036-074 - Map 2 of 2

OBJECTID*	NAME	TREATMENT TYPE	SEED GROUP	DATE
474	AROCK SDG	Drill Seeding	Non-native Grasses	1992
475	AROCK SDG	Drill Seeding	Non-native Grasses	1992
396	BOGUS CR REHAB	Drill Seeding	Unknown	1973
396	BOGUS CR REHAB	Aerial Seeding	Unknown	1973
477	BOONEY ESR	Drill Seeding	Combination	1985
486	BOONEY ESR	Aerial Seeding	Combination	1985
1748	JORDAN CREEK	Drill Seeding	Unknown	20020225
389	OWYHEE BUTTE SDG	Drill Seeding	Not Applicable	1963
390	OWYHEE BUTTE SDG	Drill Seeding	Unknown	1963
178	OWYHEE BUTTE TEST PLOT	Drill Seeding	Not Applicable	1962
287	OWYHEE BUTTE TEST PLOT	Drill Seeding	Unknown	1962
391	OWYHEE CANYON B.C.	Chemical Treatment	Not Applicable	1966
392	OWYHEE CANYON B.C.	Drill Seeding	Unknown	1966
448	OWYHEE CANYON SDG	Drill Seeding	Non-native Grasses	1968
394	OWYHEE RESIDG	Drill Seeding	Non-native Grasses	1957
434	PASCOE SDG	Drill Seeding	Non-native Grasses	1967
385	PASCOE SDG B	Drill Seeding	Not Applicable	1969
452	PASCOE SDG B	Drill Seeding	Non-native Grasses	1969
113	ROME WUI	Drill Seeding	Not Applicable	20060701
114	ROME WUI	Drill Seeding	Not Applicable	20060701
115	ROME WUI	Drill Seeding	Not Applicable	20060701
116	ROME WUI	Drill Seeding	Not Applicable	20060701
476	TANKEY ESR	Brushhat	Combination	1985
480	WLO-CHINA G-BOGUS L-WIRE CRL ES	Drill Seeding	Combination	1996
481	WLO-CHINA G-BOGUS L-WIRE CRL ES	Drill Seeding	Combination	1996
484	WLO-CHINA G-BOGUS L-WIRE CRL ES	Aerial Seeding	Combination	1996
485	WLO-CHINA G-BOGUS L-WIRE CRL ES	Aerial Seeding	Combination	1996

Note: The Land Treatments represented by navy blue dots on the map to the left are labeled with the treatments' ObjectIDs listed in the first field of the Land Treatments table shown above. Multiple types of treatments may have been applied to the same area. For example, one treatment area may have been plowed and drill seeded - a record is shown in the table for each type of treatment.